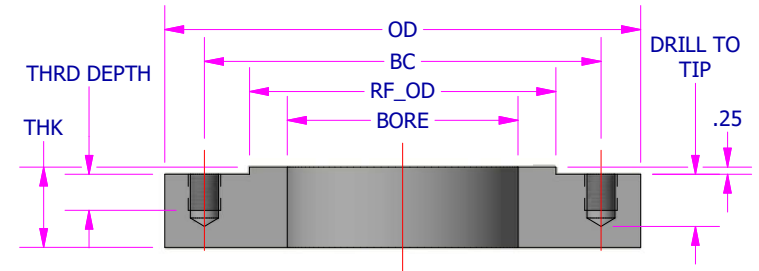
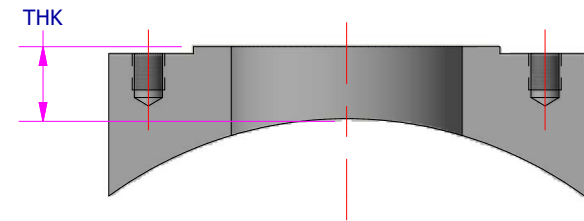


600# STUDDING OUTLET

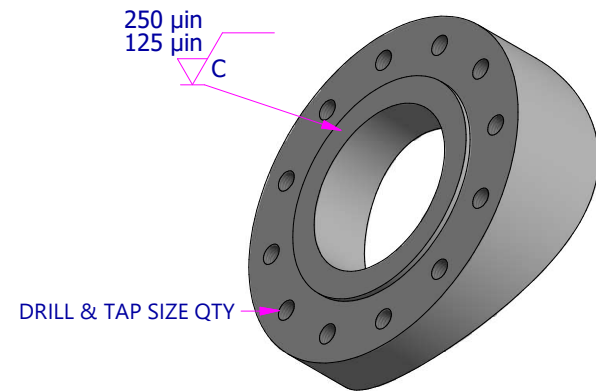
SIZE - BORE	THK	OD	RF_OD	BC	BH_QTY	DRILL TO TIP	TAP	HOLE SIZE	THREAD DEPTH
0.5	1.50 in	3.75 in	1.38 in	2.62 in	4	0.88 in	1/2-13 UNC	27/64 in	0.56 in
0.75	1.75 in	4.62 in	1.69 in	3.25 in	4	1.12 in	5/8-11 UNC	17/32 in	0.75 in
1	1.75 in	4.88 in	2.00 in	3.50 in	4	1.12 in	5/8-11 UNC	17/32 in	0.75 in
1.25	1.75 in	5.25 in	2.50 in	3.88 in	4	1.12 in	5/8-11 UNC	17/32 in	0.75 in
1.5	1.94 in	6.12 in	2.88 in	4.50 in	4	1.31 in	3/4-10 UNC	21/32 in	0.88 in
2	1.75 in	6.50 in	3.62 in	5.00 in	8	1.12 in	5/8-11 UNC	17/32 in	0.75 in
2.5	2.00 in	7.50 in	4.12 in	5.88 in	8	1.31 in	3/4-10 UNC	21/32 in	0.88 in
3	2.00 in	8.25 in	5.00 in	6.62 in	8	1.31 in	3/4-10 UNC	21/32 in	0.88 in
3.5	2.12 in	9.00 in	5.50 in	7.25 in	8	1.44 in	7/8-9 UNC	49/64 in	1.00 in
4	2.12 in	10.75 in	6.19 in	8.50 in	8	1.44 in	7/8-9 UNC	49/64 in	1.00 in
5	2.25 in	13.00 in	7.31 in	10.50 in	8	1.56 in	1-8 UNC	7/8 in	1.12 in
6	2.25 in	14.00 in	8.50 in	11.50 in	12	1.56 in	1-8 UNC	7/8 in	1.12 in
8	2.50 in	16.50 in	10.62 in	13.75 in	12	1.81 in	1 1/8-8 UN	1 in	1.25 in
10	2.75 in	20.00 in	12.75 in	17.00 in	16	2.12 in	1 1/4-8 UN	1 1/8 in	1.44 in
12	2.75 in	22.00 in	15.00 in	19.25 in	20	2.12 in	1 1/4-8 UN	1 1/8 in	1.44 in
14	2.88 in	23.75 in	16.25 in	20.75 in	20	2.25 in	1 3/8-8 UN	1 1/4 in	1.56 in
16	3.00 in	27.00 in	18.50 in	23.75 in	20	2.38 in	1 1/2-8 UN	1 3/8 in	1.69 in
18	3.25 in	29.25 in	21.00 in	25.75 in	20	2.56 in	1 5/8-8 UN	1 1/2 in	1.88 in
20	3.25 in	32.00 in	23.00 in	28.50 in	24	2.56 in	1 5/8-8 UN	1 1/2 in	1.88 in
24	3.75 in	37.00 in	27.25 in	33.00 in	24	3.00 in	1 7/8-8 UN	1 3/4 in	2.12 in




FLAT



CONTOURED



ALL DIMENSIONS ARE IN INCHES.

DRAWN BY BAH	DATE 2/20/2020	 PFAM Precision Flange & Machine, Inc 13123 West Hardy Road Houston, TX 77060 (281)447-8077
APPROVED BY S.B.	DATE 12/02/2020	
DESCRIPTION 600# STUDDING OUTLET		
DRAWING NUMBER 600 STUOUT MSTR	REV 0	