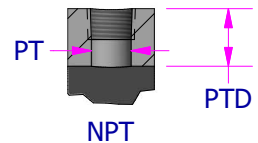
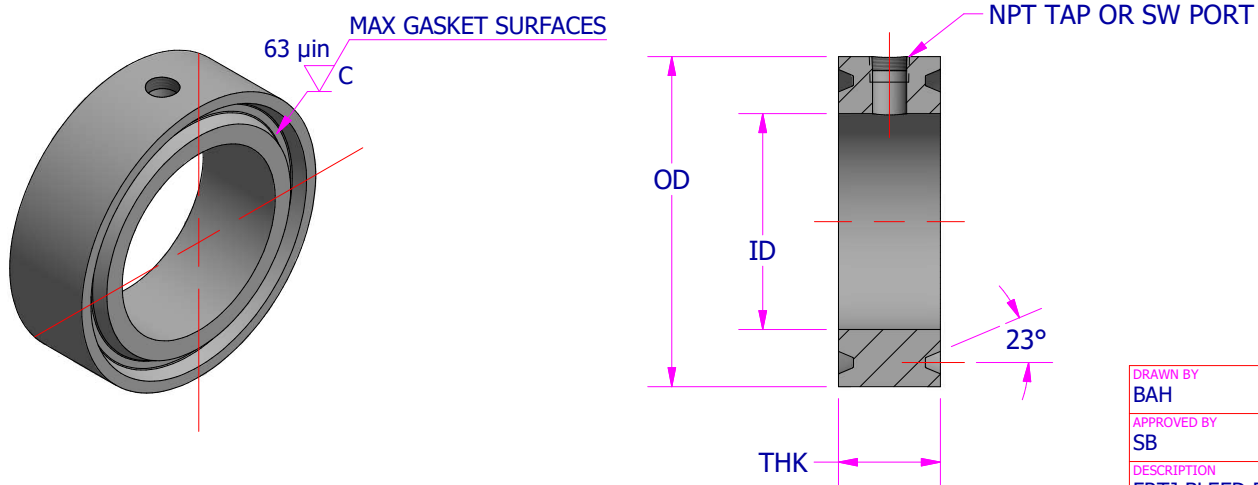
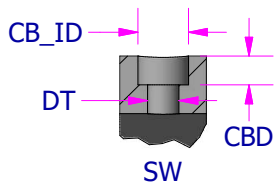


		300# & 600#			900#			1500#			2500#		
SIZE	ID	R No	THK	OD	R No	THK	OD	R No	THK	OD	R No	THK	OD
1"	1.32 in	16	2.12 in	2.75 in	16	2.12 in	2.81 in	16	2.12 in	2.81 in	18	2.12 in	3.25 in
1.5"	1.90 in	20	2.12 in	3.56 in	20	2.12 in	3.62 in	20	2.12 in	3.62 in	23	2.12 in	4.50 in
2"	2.38 in	23	2.12 in	4.25 in	24	2.12 in	4.88 in	24	2.12 in	4.88 in	26	2.12 in	5.25 in
2.5"	2.88 in	26	2.12 in	5.00 in	27	2.12 in	5.38 in	27	2.12 in	5.38 in	28	2.12 in	5.88 in
3"	3.50 in	31	2.12 in	5.75 in	31	2.12 in	6.12 in	35	2.12 in	6.62 in	32	2.12 in	6.62 in
4"	4.50 in	37	2.12 in	6.88 in	37	2.12 in	7.12 in	39	2.12 in	7.62 in	38	2.50 in	8.00 in
5"	5.56 in	41	2.12 in	8.25 in	41	2.12 in	8.50 in	44	2.12 in	9.00 in	42	2.50 in	9.50 in
6"	6.63 in	45	2.12 in	9.50 in	45	2.12 in	9.50 in	46	2.12 in	9.75 in	47	2.50 in	11.00 in
8"	8.63 in	49	2.12 in	11.88 in	49	2.12 in	12.12 in	50	2.50 in	12.50 in	51	2.50 in	13.38 in
10"	10.75 in	53	2.12 in	14.00 in	53	2.12 in	14.25 in	54	2.50 in	14.62 in	55	2.75 in	16.75 in
12"	12.75 in	57	2.12 in	16.25 in	57	2.12 in	16.50 in	58	2.50 in	17.25 in	60	2.75 in	19.50 in
14"	14.00 in	61	2.12 in	18.00 in	62	2.50 in	18.38 in	63	2.50 in	19.25 in			
16"	16.00 in	65	2.12 in	20.00 in	66	2.50 in	20.62 in	67	2.75 in	21.50 in			
18"	18.00 in	69	2.12 in	22.62 in	70	2.50 in	23.38 in	71	2.75 in	24.12 in			
20"	20.00 in	73	2.12 in	25.00 in	74	2.50 in	25.50 in	75	2.75 in	26.50 in			
24"	24.00 in	77	2.12 in	29.50 in	78	2.75 in	30.38 in	79	3.00 in	31.25 in			

NPT TAP		
NPT	PT	PTD
1/8-27	0.332 in	THRU
1/4-18	0.438 in	THRU
3/8-18	0.562 in	THRU
1/2-14	0.703 in	THRU
3/4-14	0.906 in	THRU



SW PORTS			
SW	CB_ID	CBD	DT
1/8 in	0.42 in	0.44 in	0.31 in
1/4 in	0.56 in	0.44 in	0.38 in
3/8 in	0.69 in	0.44 in	0.50 in
1/2 in	0.88 in	0.50 in	0.63 in
3/4 in	1.06 in	0.56 in	0.63 in



STAMP:

SIZE-RATE  
MATERIAL  
HT#  
PFAM

DRAWN BY BAH	DATE 5/1/2020
APPROVED BY SB	DATE 5/1/2020
DESCRIPTION FRTJ BLEED RINGS	
DRAWING NUMBER FRTJ BR MSTR	REV 0

