

600# BLEEDER/VENT BLIND V-NOTCH

SIZE	THK	OD	L	W	Z	FD	PD	PS
1.00	1.25 in	2.75 in	4 in	1.00 in	0.354 in	0.825 in	1.347 in	0.957 in
2.00	1.25 in	4.25 in	4 in	1.00 in	0.845 in	0.825 in	1.606 in	1.939 in
3.00	1.25 in	5.75 in	4 in	1.00 in	1.260 in	0.929 in	2.109 in	2.900 in
4.00	1.25 in	7.50 in	4 in	1.00 in	1.663 in	1.025 in	2.737 in	3.826 in
5.00	1.25 in	9.38 in	5 in	1.00 in	2.157 in	1.025 in	3.184 in	4.813 in
6.00	1.25 in	10.38 in	5 in	1.00 in	2.631 in	1.025 in	3.210 in	5.761 in
8.00	1.25 in	12.50 in	5 in	1.00 in	3.563 in	1.025 in	3.338 in	7.625 in
10.00	1.38 in	15.62 in	6 in	1.00 in	4.625 in	1.090 in	3.835 in	9.750 in
12.00	1.62 in	17.88 in	6 in	1.50 in	5.625 in	1.210 in	3.965 in	11.750 in
14.00	1.75 in	19.25 in	6 in	1.50 in	6.250 in	1.275 in	4.025 in	13.000 in
16.00	2.00 in	22.12 in	6 in	1.50 in	7.250 in	1.400 in	4.616 in	15.000 in
18.00	2.12 in	24.00 in	6 in	1.50 in	8.250 in	1.460 in	4.400 in	17.000 in
20.00	2.50 in	26.75 in	6 in	1.50 in	9.250 in	1.650 in	4.775 in	19.000 in
24.00	2.88 in	31.00 in	6 in	1.50 in	11.250 in	1.840 in	4.900 in	23.000 in

NPT TAPS

NPT	PT	*PTD
1/8-27	0.332 in	0.62 in
1/4-18	0.438 in	0.75 in
3/8-18	0.562 in	1.00 in
1/2-14	0.703 in	1.25 in

SW PORTS

SW	CB_ID	CBD
1/8 in	0.42 in	0.44 in
1/4 in	0.56 in	0.44 in
3/8 in	0.69 in	0.44 in
1/2 in	0.88 in	0.50 in

NOTES:

OD = PER ASME B16.48.

Z = ("PS" - "F")/2 UNLESS SPECIFIED DIFFERENT BY CUSTOMER.

"F" = Ø.25" LINE SIZE 2" AND BELOW, Ø.38 FOR 3" LINE SIZE, AND Ø.50 FOR LINE SIZE 4" AND LARGER.

UNLESS SPECIFIED DIFFERENT BY CUSTOMER DRILL "F" = "P" .

"PD" = ("OD" / 2) - "Z") + "F".

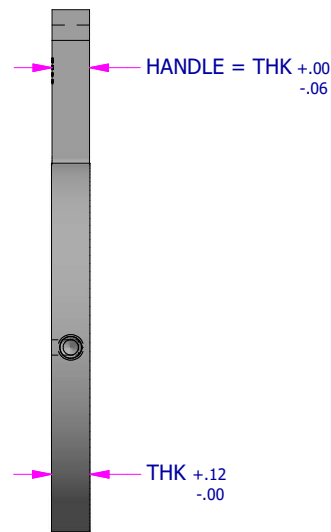
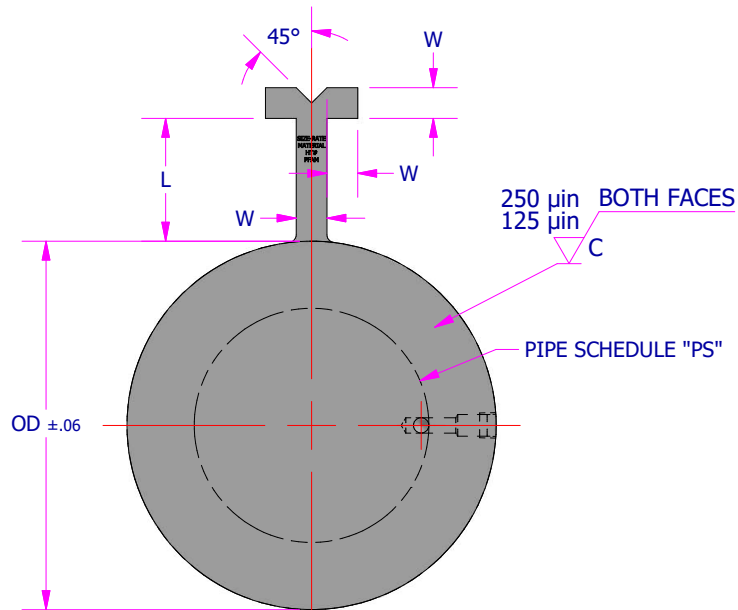
TAP DRILL SIZE "PT" = TAP DRILL SIZE FOR THE TAP.

UNLESS SPECIFIED OTHERWISE, THE V-NOTCH HANDLE IS 90 DEG FROM TAP.

ALL DEPTH DIMENSIONS "FD", "PD", AND "PTD" ARE TO DRILL TIP.

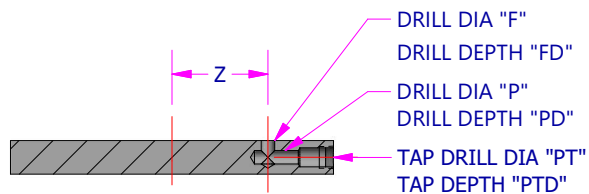
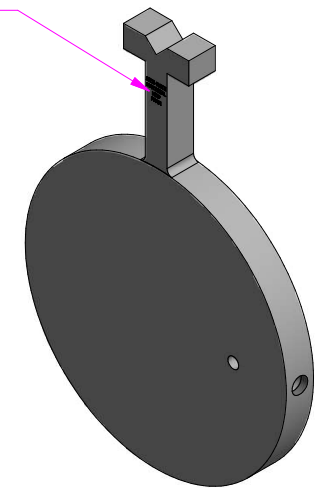
PIPE SCHEDULE ID IS XH UNLESS SPECIFIED OTHERWISE.

*DEPTH OF PTD WILL BE LESS FOR 2.5" AND UNDER.

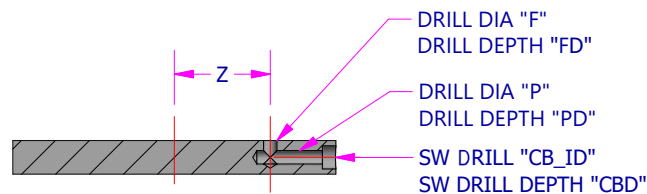


STAMP HANDLE:

SIZE-RATE
VENT
MATERIAL
HT#
PFAM



NPT TAP



SW PORT

DRAWN BY BAH	DATE 2/20/2020
APPROVED BY SB	DATE 2/20/2020
DESCRIPTION 600# BLEEDER/VENT BLIND V-NOTCH	
DRAWING NUMBER 600 BBV MSTR	REV 0

