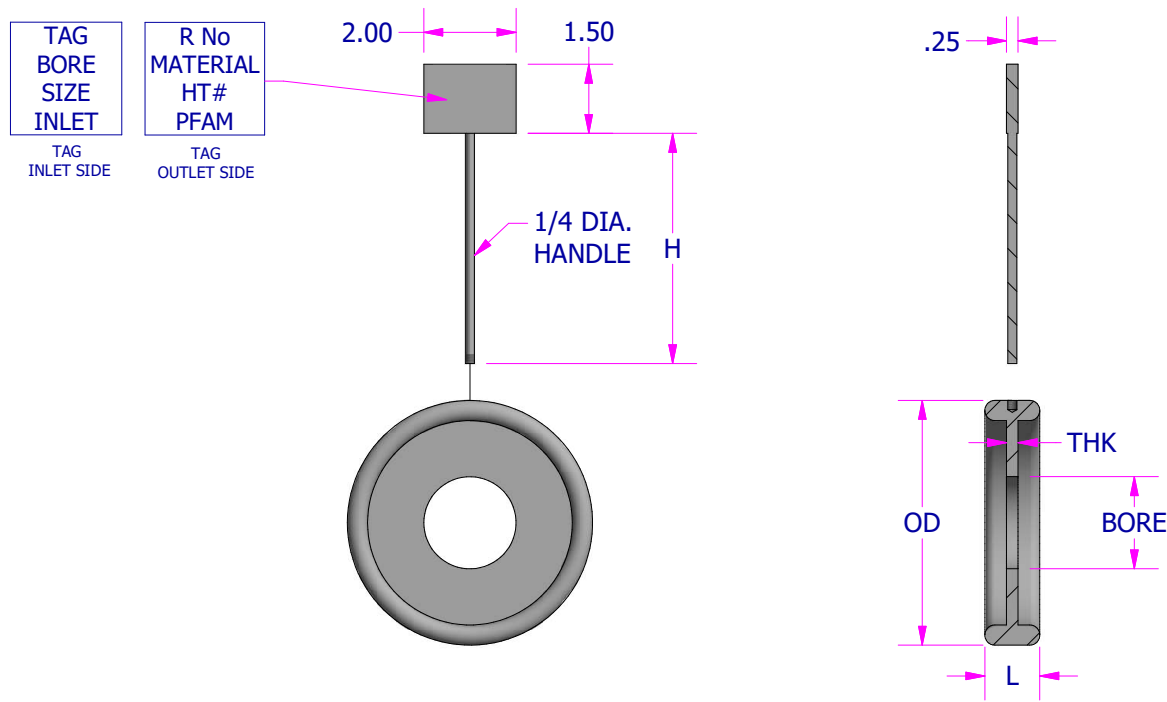


ASME CLASS 1500#							ASME CLASS 2500#					
SIZE	R No	THK	OD	H	L	GAP	R No	THK	OD	H	L	GAP
0.5	R12	0.12	1.874	4.00	1.00	0.59	R13	0.12	2.000	4.00	1.00	0.59
0.75	R14	0.12	2.062	4.00	1.00	0.59	R16	0.12	2.312	4.00	1.00	0.59
1	R16	0.12	2.313	4.00	1.00	0.59	R18	0.12	2.687	4.00	1.00	0.59
1.5	R20	0.12	3.000	4.00	1.00	0.59	R23	0.12	3.688	5.00	1.06	0.50
2	R24	0.25	4.188	5.00	1.19	0.62	R26	0.25	4.438	5.00	1.19	0.62
2.5	R27	0.25	4.688	5.00	1.19	0.62	R28	0.25	4.875	5.00	1.31	0.69
3	R35	0.25	5.813	5.00	1.19	0.62	R32	0.25	5.500	6.00	1.31	0.81
4	R39	0.25	6.813	5.00	1.19	0.62	R38	0.25	6.813	6.00	1.44	0.72
5	R44	0.25	8.063	6.00	1.19	0.62	R42	0.25	8.250	7.00	1.56	0.72
6	R46	0.25	8.812	6.00	1.31	0.69	R47	0.25	9.750	7.00	1.56	0.72
8	R50	0.25	11.250	6.00	1.44	0.72	R51	0.25	11.875	8.00	1.69	0.75
10	R54	0.25	13.375	7.00	1.44	0.72	R55	0.25	14.625	8.00	2.00	0.81
12	R58	0.25	15.875	8.00	1.69	0.75	R60	0.25	17.250	9.00	2.12	0.88
14	R63	0.25	17.500	8.00	1.88	0.78						
16	R67	0.38	19.625	9.00	2.13	1.00						
18	R71	0.38	22.125	9.00	2.13	1.00						
20	R75	0.38	24.250	10.00	2.13	1.00						
24	R79	0.50	28.625	10.00	2.44	1.12						

GAP REFERS TO THE APPROXIMATE SPACE BETWEEN RTJ FLANGES WHEN ASSEMBLED WITH 560 PLATE INSTALLED IN BETWEEN FLANGES.



560 INTEGRAL TYPE ORIFICE PLATES ARE AVAILABLE IN 316SS AS A STANDARD, 304SS & OTHER ALLOYS ARE AVAILABLE AS A SPECIAL. PLATE MAY BE FURNISHED WITH A BORE OR AS A BLANK. STANDARD PROFILE IS MALE OVAL. OCTAGONAL RING AVAILABLE AS A SPECIAL.

DRAWN BY BAH	DATE 7/1/2020
APPROVED BY SB	DATE 7/1/2020
DESCRIPTION 560 INTGR L TYPE RTJ ORIFICE PLATE	
DRAWING NUMBER 560 1500-2500	REV 0



** ALL DIMENSIONS ARE IN INCHES.