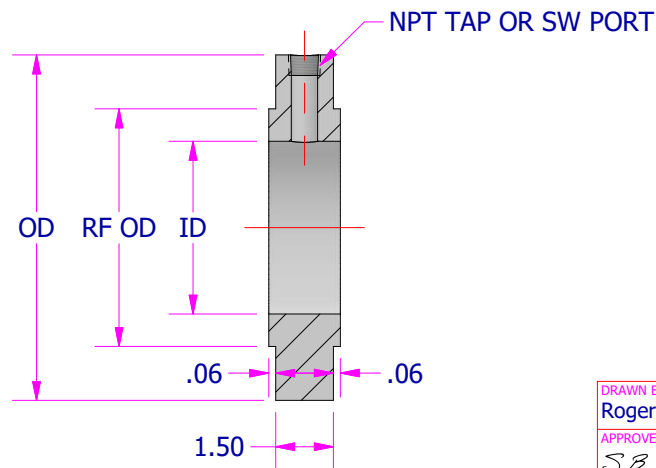
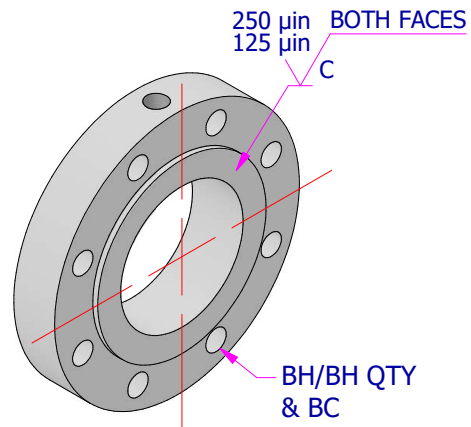


300# FULL FACE BLEED RINGS

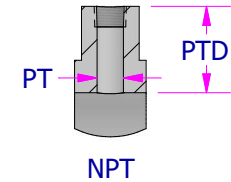
SIZE	OD	ID	RF OD	BC	BH	BH QTY
1"	4.88 in	1.32 in	2.00 in	3.50 in	0.750 in	4
1.25"	5.25 in	1.66 in	2.50 in	3.88 in	0.750 in	4
1.5"	6.12 in	1.90 in	2.88 in	4.50 in	0.875 in	4
2"	6.50 in	2.38 in	3.62 in	5.00 in	0.750 in	8
2.5"	7.50 in	2.88 in	4.12 in	5.88 in	0.875 in	8
3"	8.25 in	3.50 in	5.00 in	6.62 in	0.875 in	8
4"	10.00 in	4.50 in	6.19 in	7.88 in	0.875 in	8
5"	11.00 in	5.56 in	7.31 in	9.25 in	0.875 in	8
6"	12.50 in	6.63 in	8.50 in	10.62 in	0.875 in	12
8"	15.00 in	8.63 in	10.62 in	13.00 in	1.000 in	12
10"	17.50 in	10.75 in	12.75 in	15.25 in	1.125 in	16
12"	20.50 in	12.75 in	15.00 in	17.75 in	1.250 in	16
14"	23.00 in	14.00 in	16.25 in	20.25 in	1.250 in	20
16"	25.50 in	16.00 in	18.50 in	22.50 in	1.375 in	20
18"	28.00 in	18.00 in	21.00 in	24.75 in	1.375 in	24
20"	30.50 in	20.00 in	23.00 in	27.00 in	1.375 in	24
24"	36.00 in	24.00 in	27.25 in	32.00 in	1.625 in	24



(FULL FACE WITH
OPTIONAL RAISED FACE)

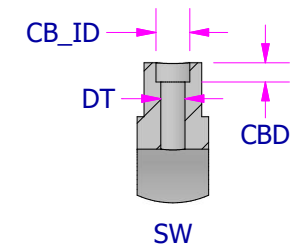
NPT TAP

NPT	PT	*PTD
1/8-27	0.332 in	THRU
1/4-18	0.438 in	THRU
3/8-18	0.562 in	THRU
1/2-14	0.703 in	THRU
3/4-14	0.906 in	THRU



SW PORTS

SW	CB_ID	CBD	DT
1/8 in	0.42 in	0.44 in	0.31 in
1/4 in	0.56 in	0.44 in	0.38 in
3/8 in	0.69 in	0.44 in	0.50 in
1/2 in	0.88 in	0.50 in	0.63 in
3/4 in	1.06 in	0.56 in	0.63 in



STAMP:

SIZE-RATE
MATERIAL
HT#
PFAM

DRAWN BY Roger S	DATE 12.16.2024
APPROVED BY S.B.	DATE 12/16/2024
DESCRIPTION 300# FULL FACE BLEED RINGS	
DRAWING NUMBER 300 FF BR MSTR	REV 1

